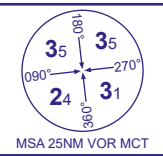


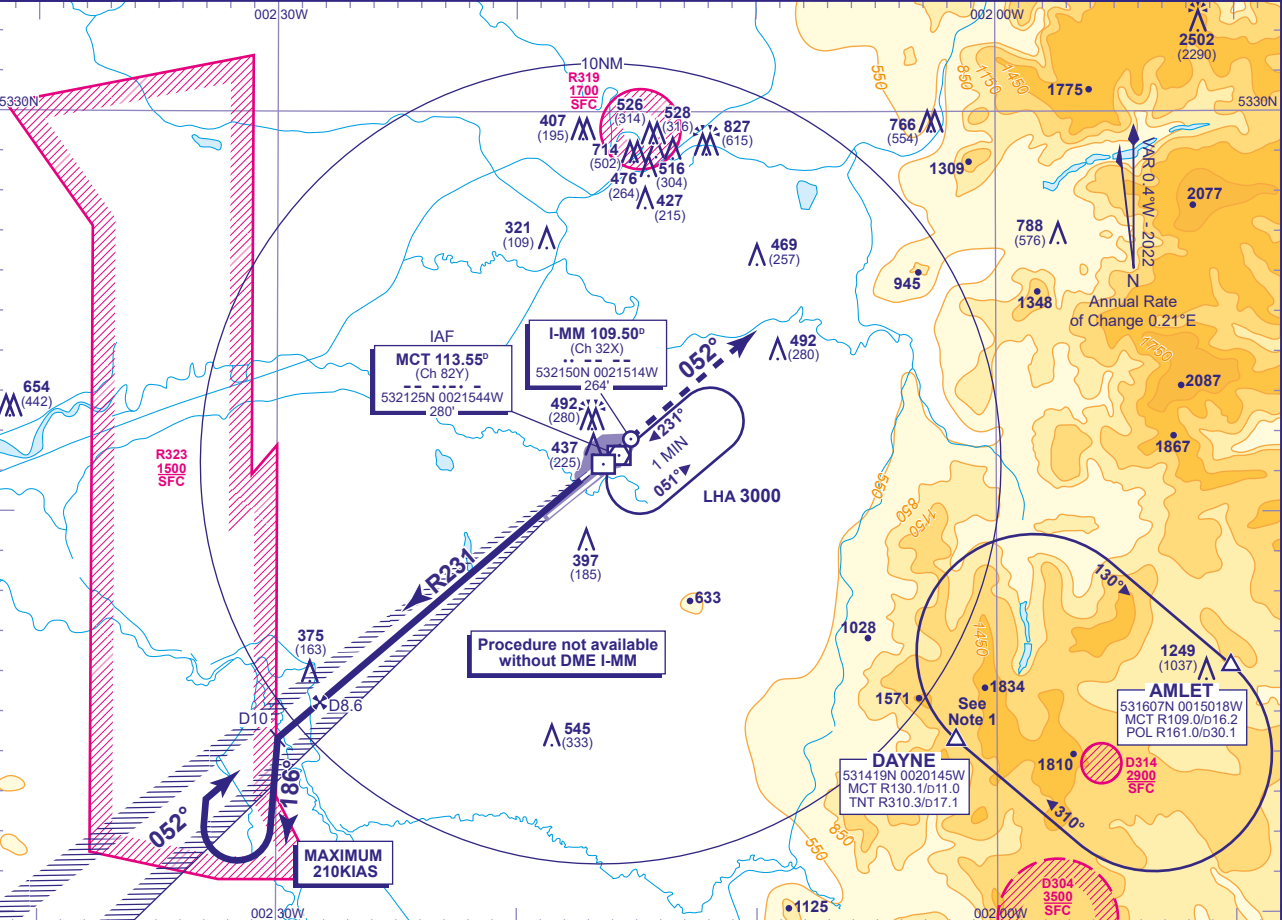
INSTRUMENT APPROACH STAFF - ICAO

MANCHESTER  
ILS/DME (I-MM)  
RWY 05L  
(ACFT CAT A,B,C,D)

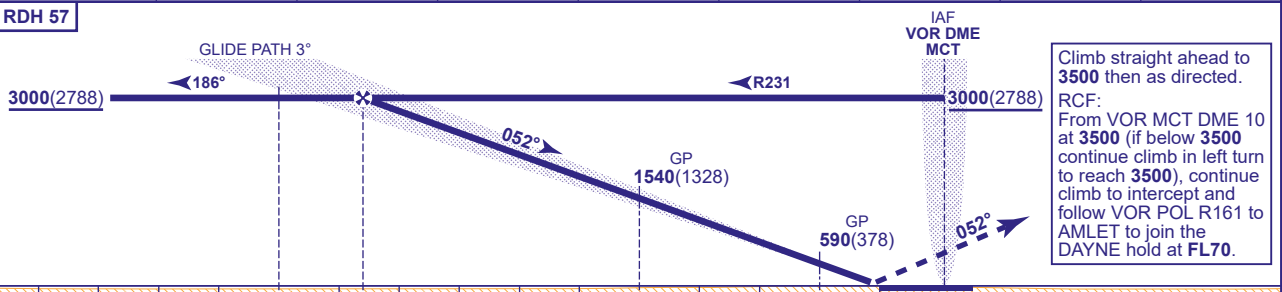


APP	118.580, 135.005	MANCHESTER RADAR	AD ELEVATION	257
	121.355	MANCHESTER DIRECTOR	THR ELEVATION	212
TWR	118.630, 119.405	MANCHESTER TOWER	OBSTACLE ELEVATION	2502 AMSL (2290) (ABOVE THR)
	121.855, 121.705	MANCHESTER GROUND		
ARRIVAL ATIS	128.180	MANCHESTER INFORMATION	BEARINGS ARE MAGNETIC	

TRANSITION ALTITUDE	5000
---------------------	------



RECOMMENDED PROFILE GLIDE PATH 3°, 318FT/NM								
DME I-MM	8	7	6	5	4	3	2	1
ALT(HGT)	2810(2598)	2490(2278)	2170(1958)	1860(1648)	1540(1328)	1220(1008)	900(688)	590(378)



Climb straight ahead to 3500 then as directed.  
RCF:  
From VOR MCT DME 10 at 3500 (if below 3500 continue climb in left turn to reach 3500), continue climb to intercept and follow VOR POL R161 to AMLET to join the DAYNE hold at FL70.

Aircraft Category	A	B	C	D	Rate of descent	G/S KT	160	140	120	100	80
OCA (OCH)	CAT I	369(157)	380(168)	392(180)	405(193)	FT/MIN	850	740	640	530	420
VM(C)OCA (OCH AAL)	Total Area	790(533)	820(563)	1110(853)	1110(853)						

NOTE 1 DAYNE HOLD:- Limiting outbound distance MCT DME 16/TNT DME 14. Minimum holding level is FL70.  
2 Procedure turns restricted to maximum 210KIAS.

CHANGE (11/25): VOR POL RADIAL IN RCF CORRECTED.